



**BLUERANGE MODERN OFFICE**

AN ALL-INCLUSIVE,  
FIXED PRICE CONCEPT  
FOR WORKPLACE  
AS A SERVICE



# A MODERN OFFICE CONCEPT WITH EVERYTHING INCLUDED – EXCEPT MESS AND STRESS

We provide an all-inclusive IT solution that lets you focus on what you're good at - your job! For a monthly fee per user, we supply the tools needed to get the work done. From preparing devices and applications to manage users and connections.

## HARDWARE

Devices are rented per user and month. Computer, iPad or Phone including optional peripherals.



## SOFTWARE

Your devices come pre-installed with virtual desktop, applications and access to file sharing, ready-to-go.



## CONNECTIVITY

We provide wireless connection for intra-organizational communication and internet access.



## MANAGEMENT

Our Client Domain and Workspace services manage user access and administration.





FOR THE USER

# HOW EVERYDAY WORK LIFE GETS EASIER – EVERY DAY

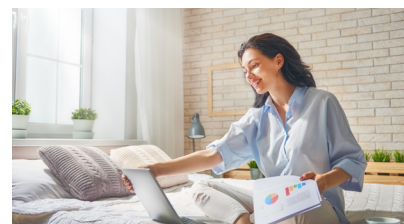
Daily digital support - perhaps something for you too? With Device-as-a-service you are provided with a wide range of optional devices for mobile and stationary use. They come pre-configured to grab-as-you-go and are continuously remote-managed and updated. Applications and data are stored and available from anywhere in the Cloud.



Enjoy a worry-free and productive work/life balance.



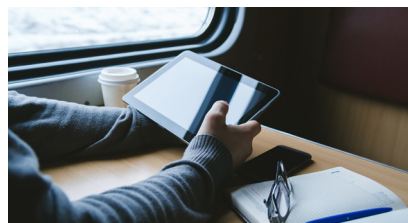
Get a structured IT-platform with remote management and instant access to qualified support.



Work from where you desire. Solve alarming issues on the run.



Choose your preferred device fully preconfigured.



Cloud-based applications for productive working hours anytime and anywhere.



Full support for communication and collaboration.







### ASSET MANAGEMENT

All under full control. Inventory reports updated 24/7 with geo-location functionality and remote control management.



### PERSONAL ASSISTANCE

Our support organization is always by your side to assist with any issues and improvements.



*No more daily worries  
when running the Bluerange  
Modern Office.*

FOR THE IT-MANAGER

# ENDLESS BENEFITS, FROM START TO FINISH

Liberating the strategic potential of digital enhancements is one of the core benefits of the Bluerange Modern Office concept. It entirely eliminates daily routine tasks for updates and maintenance. Our support manages user errors and device failures, enabling focus on digital positions for your future.

### ACQUISITION & SOURCING

With our pre-packaged hardware solutions, functions and compatibility of software deployed, you avoid a time-consuming procurement process.

### INSTALLATION & DEPLOYMENT

Configuration and installation combined with logistics for distribution and collection. Instructions and training simplified with a standardized range of devices.

### OPERATION, SECURITY & GDPR

Centralized maintenance for patching, updates, backup, and anti-virus. GDPR-compliant policies for passwords, encryption, storage and communication.

### END-OF-LIFE & RECYCLING

Outranged equipment is discarded under rigorous routines that ensure safe data removal as well as reuse or recycling that complies to environmental policies.





FOR THE EXECUTIVE GROUP

# WELL-MANAGED IT WITH COSTS UNDER CONTROL

A fixed-rate lease of hardware bundled with software, services, and support enables managers to be in full control of IT-related matters. Cost control and financial benefits perhaps the most obvious. In addition, it relieves the IT department to focus on strategic digital development and It also simplifies the daily digital work life.

## COST CONTROL & CASH FLOW

With equipment on prearranged leasing contracts with bundled support and services included in monthly fees, costs are under full control.

## A PRODUCTIVE ORGANISATION

With today's fast-paced digital development, prerequisites for managing a business is in constant change. IT can support the crucial development of business potentials by outsourcing non-core device management.

## ATTRACTIVE EMPLOYER

Competence is always a central resource and a future-defining factor. Valuable employers require modern IT solutions and support enabling productivity while on the move, working from the office or home.

## FUTURE PROOF AND SAFE

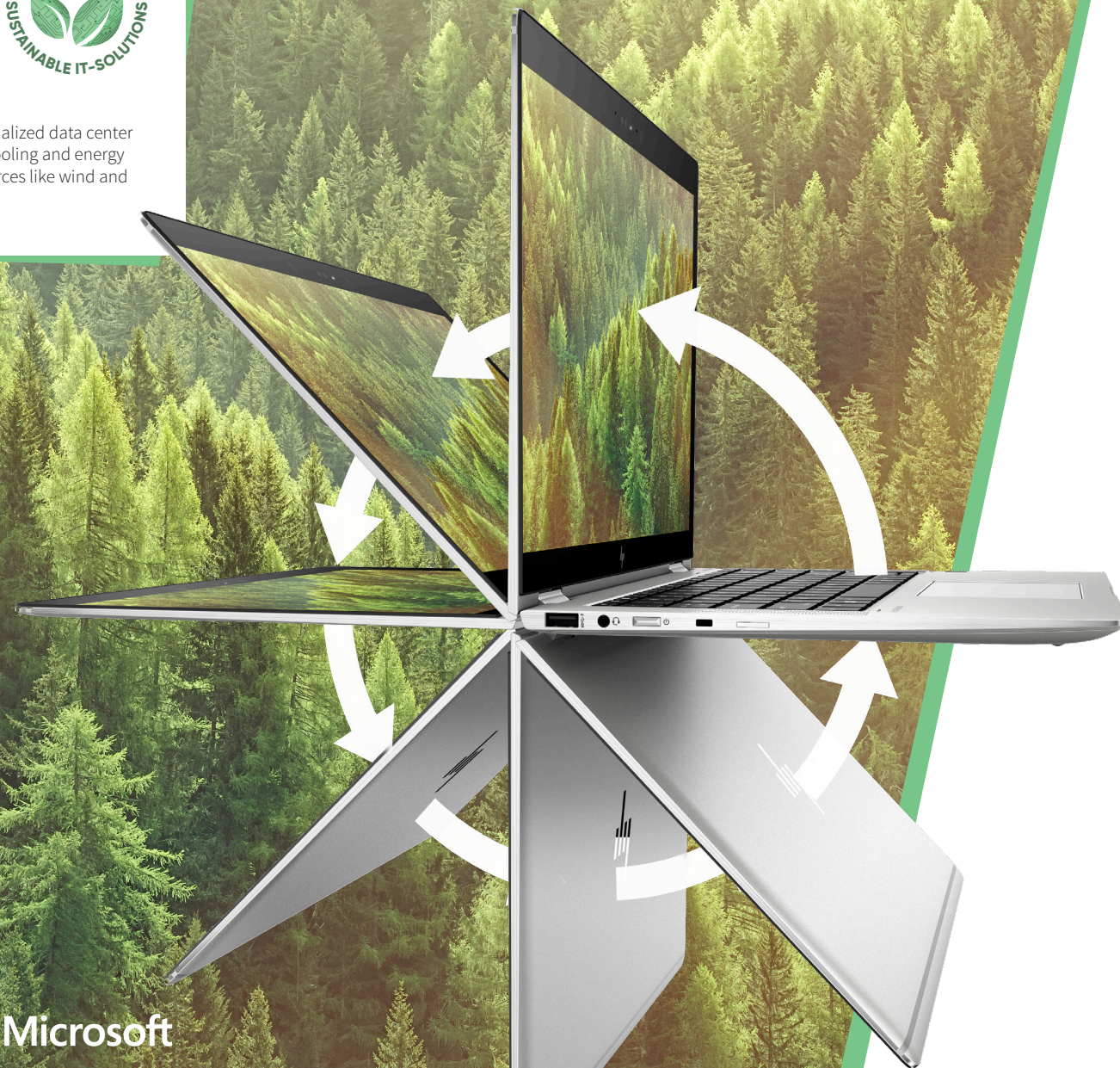
Our Modern Office concept is built to last. With strict routines, we secure company assets and comply with GDPR and other territorial regulations. We build on the circular economy reusing and recycling equipment and materials.





We at Bluerange strive to promote and assist towards a more sustainable future.

For instance through a virtualized data center with rack integrated lake cooling and energy from renewable, green sources like wind and water.



3 STEP IT 

# EVERYONE GAINS FROM RECYCLED IT HARDWARE

Our Modern Office concept in cooperation with 3 Step IT employs a circular economy for reuse of IT hardware. The idea is that equipment no longer fulfilling your demands can still be of value for someone else. Consequently, leasing and reuse of IT equipment generate several benefits. When technology gets recycled, it reduces costs on the environment and also for your organization.



## CARE FOR THE ENVIRONMENT

When refurbishing instead of scrapping after the three years leasing period, the equipment might get an increased lifespan of up to 5-6 years.

As almost all environmental costs arise in the initial raw material production and manufacturing process, a doubled lifespan practically cuts the environmental impact in half.

Our recycling process maximizes material reuse.



## LOWER RISK OF DATA LOSS

Without appropriate data destruction, there can be no documented proof when scrapping hardware, that secure business and personal information will be removed and entirely deleted.

Any data leakage can harm and put your business at risk, with irreparable goodwill damages and GDPR policy breaches.



## DEPRECIATION COSTS REDUCED

A normal IT equipment lifespan of three years with subsequent scrapping or material recycling, the first user has to carry the entire cost of depreciation, down to a zero-value.

With a system for refurbishing and a second-hand market, the depreciation cost for the first user can be reduced by 30-50%.



## LESS CAPITAL TIED UP

In addition to reduced depreciation costs, the 3 Step IT-concept with leased IT equipment releases operational capital. In addition, it enables the business to further optimize costs and realize greater business development potential.

Hardware partners:





# OUR SERVICES WILL MAKE YOU FEEL WELL SERVED

The benefits of our Modern Office – is the support and technical services we provide that makes a difference. We include a high level of security in everything we do managing your equipment through our cloud services.



## SUPPORT SERVICES

Our supporting services are a wide range of things we do for you. The personal assistance in our hot-line, of course, but also the attention for equipment from acquisition and installation, through the daily maintenance onto end-of-life recycling.



## ONLINE SERVICES

The online services we provide consists of our cloud services and server support based on Office 365 and Azure. With remote assistance we manage your devices through geographical tracking and remote upgrades.



## FUNCTIONAL SERVICES

Functions we solve with our Modern Office offering cover asset management, financial control, reporting, insurance and guarantee issues. We also provide services for any security, encryption, authentication and GDPR compliance.



## GDPR-COMPLIANCE GUARANTEED

Our services will ensure that your infrastructure complies with GDPR regulations. We encrypt communication and can wipe device data remotely. At our Data Centers, firewalls and intruder protection are in place to protect storage equipment as well as data integrity.





# THE SIMPLE WAY TO MAKE YOUR IT-LIFE SIMPLER

WHAT YOU DO ▲

WHAT WE DO ▼

**1.** Requested equipment and functionality is ordered by your organization.



**2.** Detailed monthly invoices and reports are available for you.



## AQUIRE

We analyze your organization's equipment, functionality and match it to available solutions on the market. No need for internal IT to investigate, evaluate or negotiate the acquisitions.



## PREPARE

Users receive pre-installed and configured hardware combined with software ready to use. Tested configurations ensure that we can give you competent support.



## MAINTAIN

Equipment and solutions are continuously maintained. We patch and update, make backups and upgrades. Proactive management ensures high security and undisturbed operation and prolonged technical lifetime.



## MONITOR

Equipment in circulation can easily be tracked. Lost items wiped and reset. Inventory listings and software licenses are always up to date. Data integrity and security issues like users and rights are always in control.



## RENEW

Prepared routines for collection and wiping data ensures both the integrity of business-critical information and full GDPR compliance.  
  
Recycling of devices, components, and material according to rules and policies guaranteed.

Life cycle 24, 36 or 48 months.



# LET'S CONTRIBUTE!

***"One cannot do everything but everyone can do something"***

***That's a motto we have taken to heart. Therefore we not only offer a complete Modern Office concept but also a possibility for you to make a difference and contribute to a better future for people, the environment and earth.***

## **OUR KEY VALUES:**

As our customer, you can rely on our Honesty, expect us to contribute with Dedication and in everything we do, act with Compassion.



**BLU  
ER  
ANGE**

CLIMATE  
COMPENSATED  
PAPER  
[www.antalis.se](http://www.antalis.se)



**BLUERANGE**

Bluerange Sweden AB

Phone: +46 (0)36 345900

E-mail: [info@bluerange.com](mailto:info@bluerange.com)

Webb: [www.bluerange.com](http://www.bluerange.com)